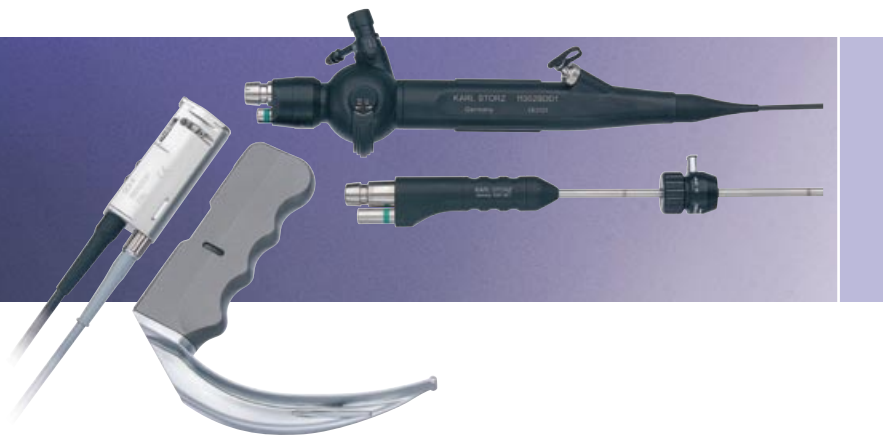


A Step Ahead with System Integration
DCI® VIDEO INTUBATION SYSTEM



KARL STORZ –
Synonymous with Innovation and Competence in
Endoscopy for over 60 Years

The New DCI® VIDEO INTUBATION SYSTEM





One Camera – all Possibilities The DCI® System*

- Brilliant image in customary KARL STORZ quality – via integrated Moiré filter
- Rapid instrument changeover in seconds – with simple click connection
- Swift application on patients – except for image sharpness, no further adjustment necessary
- Optimized image size – the displayed image can be readily adjusted for optimal magnification

The Perfect Solution: A Camera for Complete Airway Management

- BERCI-KAPLAN Video Laryngoscope
- KARL STORZ Intubation Fiberscopes in all sizes
- BONFILS Intubation Endoscopes in all sizes
- BRAMBRINCK Intubation Endoscope

One System – all Units Quick at Hand**

- TELE PACK™ – unit with video processor, light source, monitor and PCMCIA card
- AIDA™ DVD – module for first-class videos and still images on CD-ROM and DVD
- BRAUN Instrument Cart – practical, sturdy and mobile



Ready-for-use Airway Management Trolley
with DCI® VIDEO INTUBATION SYSTEM

* Direct Coupled Interface

** DCI® camera head adapts to all TELECAM® systems

The New BERCI-KAPLAN DCI® Video Laryngoscope

Visualization

- First-class image with 15,000 pixels
- Optimal image adjustment with blade tip for better orientation
- Display of inserted tube for quality control

Methodology

- Clear image and co-ordination, maneuver (BURP) possible
- Short visual axis allows lifting of epiglottis
- Less pressure on blade due to short visual axis
- Intubation can be transmitted via various media
- Entire intubation procedure can be documented.

Benefits

- Training through learning-by-doing
- Visualization and early diagnosis of difficult intubations
- Risk of patient trauma reduced
- Visualization and rapid changeover to intubation fiberscope possible, especially in case of double lumen tube placement

Hygiene

- Quick and easy to prepare
- Waterproof and fully immersible for cleaning, disinfection and sterilization up to 60°C
- Sterilizable via EtO, FO-Gas, STERIS® and STERRAD®



Different Blade Types – The Future Holds No Limits

- Robust construction – one complete unit
- Designed for routine day-to-day use
- Easy to handle following brief training

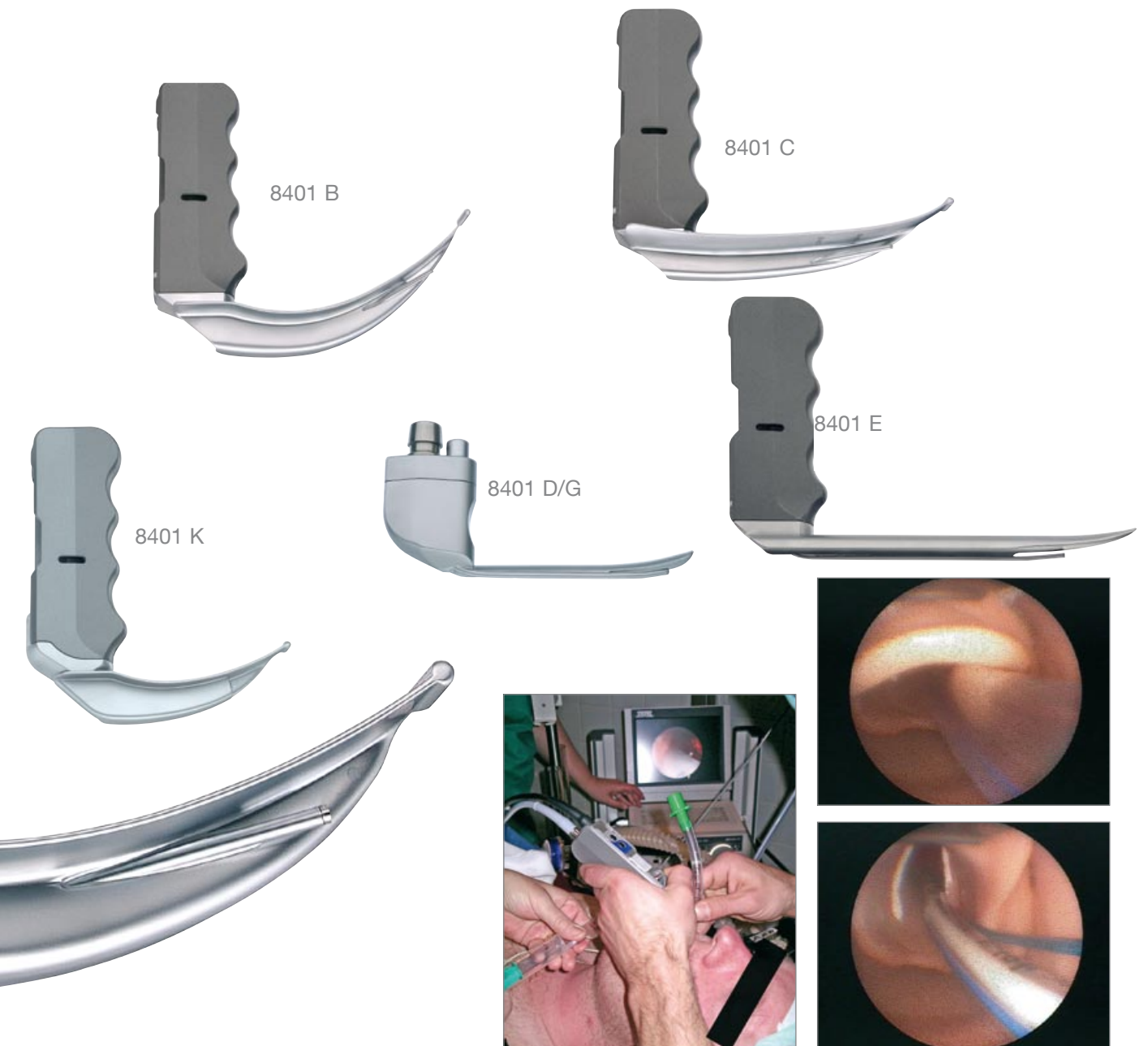


Photo: Villingen-Schwenningen Clinic

The New DCI® Intubation Fiberscope

Methodology

- Intubation fiberscopes in 5 different sizes
- Rapid changeover from i.e. video laryngoscope
- Emergency function as eyepiece can be rapidly attached to i. e. LED battery light source

Benefits

- Optimum learning curve through training with learning-by-doing
- Two heads are better than one: problems can be viewed by the entire team
- Facilitates teamwork, especially during dilatation tracheostomy
- Visual control and rapid changeover to intubation fiberscope, especially in case of double lumen tube placement

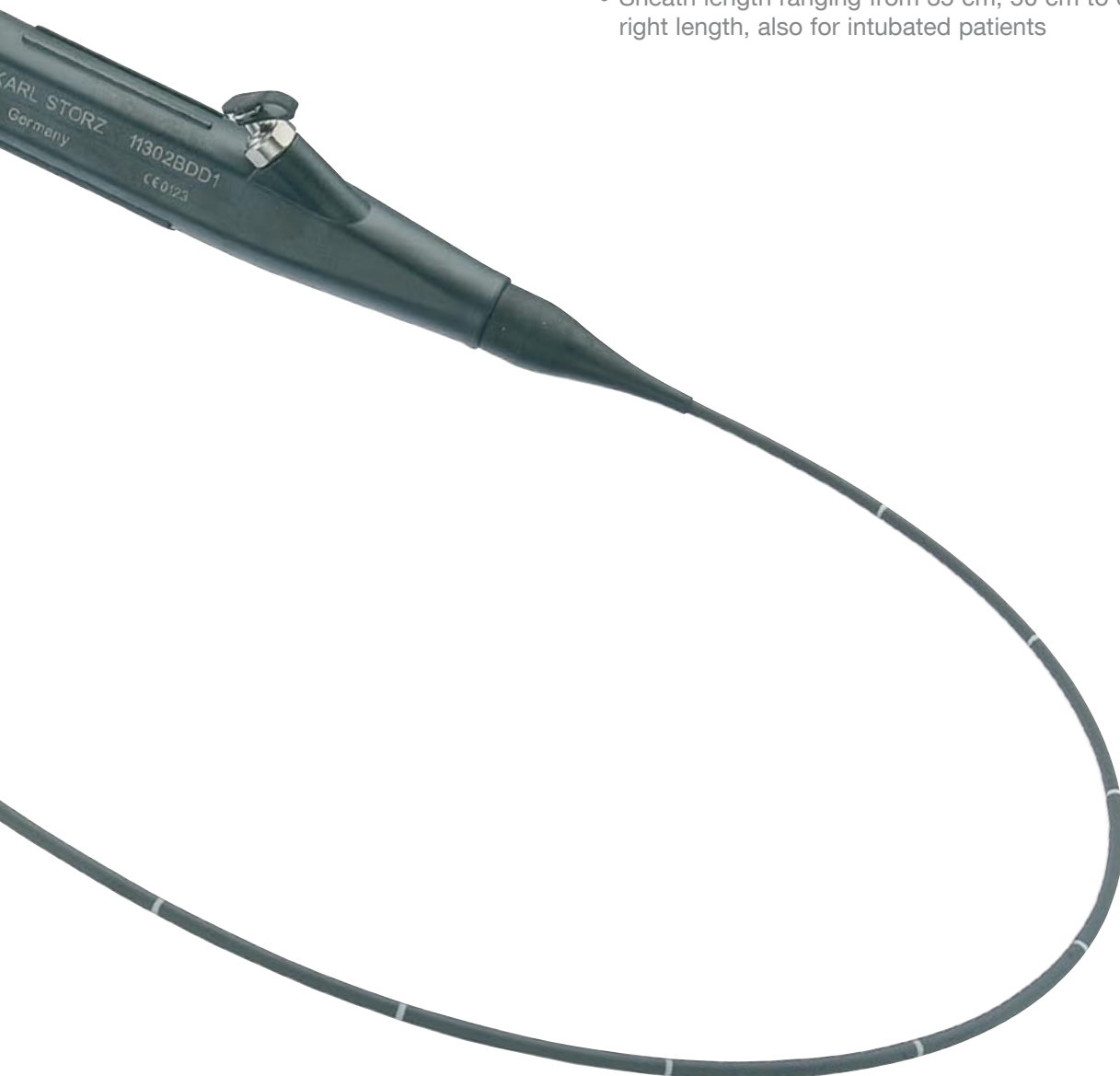
Hygiene

- Preparation – also possible without camera system
- Waterproof and fully immersible for cleaning, disinfection and sterilization up to 60°C – including STERIS® and STERRAD®



**Three Different Fiberscope Sizes –
from infants to adults the right size**

- The right choice for expectedly difficult airways and bronchoscopy
- Outer diameter of 1.8 mm, 2.8 mm, 3.7 mm, 4.5 mm and 5.2 mm
- Sheath length ranging from 35 cm, 50 cm to 65 cm – the right length, also for intubated patients



The New BONFILS / BRAMBRINCK DCI® Intubation Endoscope

Methodology

- First-class image with 35,000 pixels
- Optimal distal angle of 40° enables rapid location of vocal cords
- Retromolar instrument insertion as far as vocal cords
- Flexibility – various intubation possibilities – including laryngoscopy
- Insertion of endotracheal tube under continuous visual control
- Designed for both standard and difficult intubation
- Specially designed for unexpectedly difficult intubation
- Can also be used in thorax anesthesia with double lumen tube

Benefits

- Training through learning-by-doing
- Visualization of Difficult Airway Management
- Risk of patient trauma reduced
- Rapid changeover from video laryngoscope to BONFILS intubation endoscope
- Emergency function as eyepiece can be rapidly attached to, for example, LED battery light source

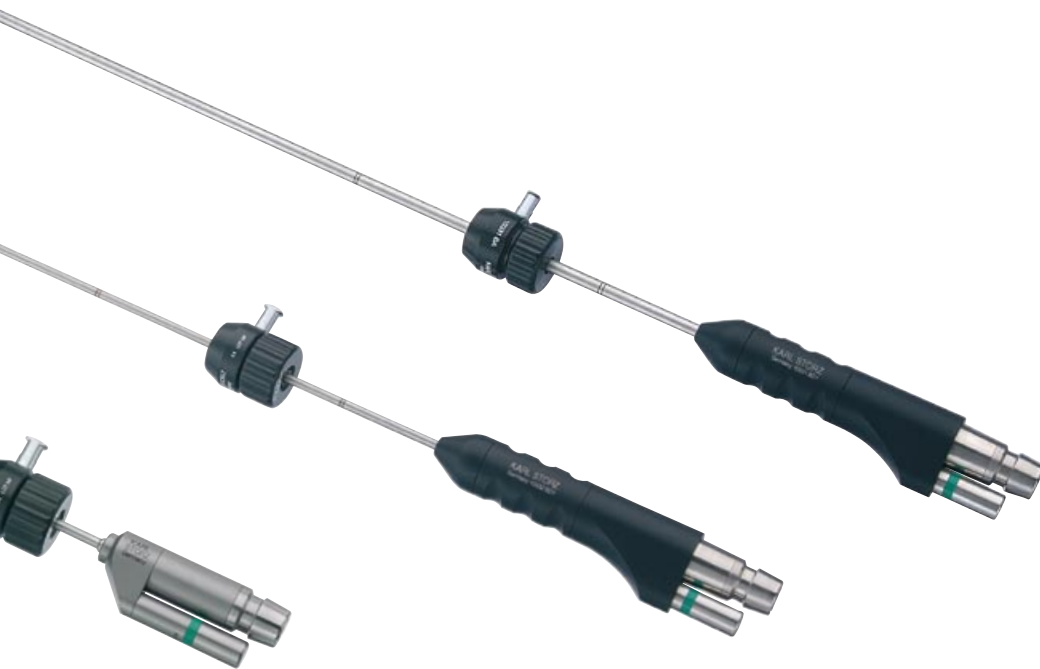
Hygiene

- Quick and easy to prepare
- Waterproof and fully immersible for cleaning, disinfection and sterilization up to 60°C – including STERIS® and STERRAD®



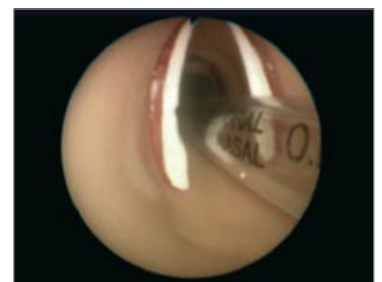
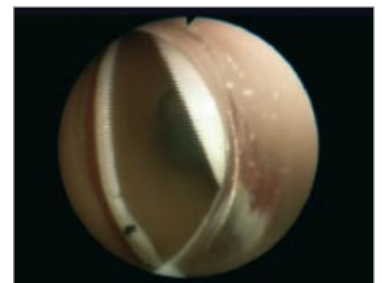
Three Different Endoscope Sizes – The Right Instrument for Tube Size as of 2.5 mm

- The right choice for the unexpected difficult airway
- Simple and robust design
- Designed for routine day-to-day use
- Easy to handle following brief training



Current Studies

- Halligan, Charters, „A clinical evaluation of the BONFILS Intubation Fibrescope“, *Anaesthesia* 2003, 58 pages 1087–1091
- Bein, Worthmann, Scholz, Brinkmann, Tonner, Steinfath, Döriges, „A comparison of the intubating laryngeal mask airway and the BONFILS intubation fibrescope in patients with predicted difficult airway“, *Anaesthesia* 2004, 59 pages 668–674
- Bein, Yan, Tonner, Scholz, Steinfath, Döriges, „Tracheal intubation using the BONFILS intubation fibrescope after failed direct laryngoscopy“, *Anaesthesia* 2004, 59 pages 1207–1209



KARL STORZ – A Step Ahead with System Integration

DCI® VIDEO INTUBATION SYSTEM



TELE PACK

- 200430 11-020 **KARL STORZ TELE PACK™**, PAL, endoscopic CCU video unit, incl. 24 Watt HI-Lux light source, integrated keyboard, 12" LCD monitor and Image Processing Module, power supply: 110–240 VAC, 50/60 Hz
consisting of:
20 0430 20-020 **TELE PACK™ Control Unit**
20 0410 32 **PCMCIA PC Card, 64MB**
400 A **Mains Cord**
536 MK **BNC Connecting Cable,**
length 180 cm
VHS (Y/C) Connecting Cable,
length 180 cm
- 547 S
- 200431 11-020 **Same, NTSC**



DCI® Camera Head

- 202620 30 **DCI® Camera Head, PAL,** with integrated optical Moiré filter
- 202621 30 **DCI® Camera Head, NTSC,** with integrated optical Moiré filter
- 495 DV **Fiber Optic Light Cable,** for DCI® telescopes, diameter 2.5 mm, length 300 cm

- 202040 01-140 KARL STORZ AIDA™ DVD**
 with Smart Screen color system: **PAL/NTSC**
 operating voltage: 100 - 240 VAC; 50/60 Hz
consisting of:
202040 20-140 KARL STORZ AIDA™ DVD
 with integrated DVD/CD-writer
 and integrated Smart Screen
Power Cord
Power Cord, USA-version
2 BNC Connecting Cable,
 length 180 cm
S-VHS (Y/C) Connecting Cable,
 length 180 cm
2 Adapters BNC-Cynch
Serial Data Cable, length 20 cm
DVI Connecting Cable,
 length 20 cm
- 400 A
 400 B
 536 MK

 547S

 200400 83
 200400 84
 200400 85

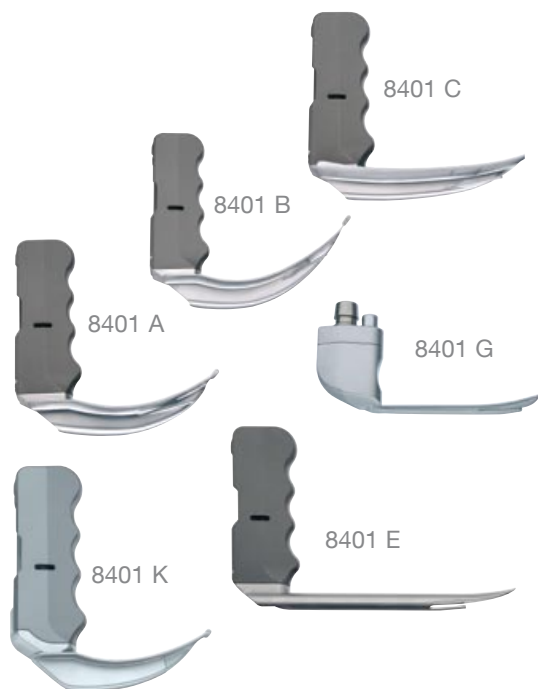


- 29005 AN Mobile Videocart,**
 consisting of:
 Basic Videocart, rides on 4 antistatic dual wheels,
 2 equipped with locking brakes, 1 fixed shelf with push
 handles, main switch in side boom, 1x drawer unit with
 lock, integrated cable conduit in both booms, 2x horizontal
 cable conduits, 1 with cable manager, 1x set of non-sliding
 stands for units, 2x equipment rails, 3x mains cords,
 2x 200 cm and 1x 100 cm, power box with socket board
 with 6 mains sockets and 6 grounding plugs
- Dimensions:
 Videocart: 530 x 1090 x 645 mm (w x h x d),
 shelf: 430 x 480 mm (w x d),
 caster diameter: 125 mm



KARL STORZ – A Step Ahead with System Integration

DCI® VIDEO INTUBATION SYSTEM



BERCI-KAPLAN DCI® Video Laryngoscope

- 8401 A **BERCI-KAPLAN DCI® Video Laryngoscope**, with MACINTOSH Laryngoscope Blade, size 3, resolution 15,000 pixel, angle of view 60°, for DCI® technology
- 8401 B **BERCI-KAPLAN DCI® Video Laryngoscope**, with MACINTOSH Laryngoscope Blade, size 4, resolution 15,000 pixel, angle of view 60°, for DCI® technology
- 8401 C **BERCI-KAPLAN DCI® Video Laryngoscope**, with DOERGES Laryngoscope Blade, resolution 15,000 pixel, angle of view 60°, for DCI® technology
- 8401 D **BERCI-KAPLAN DCI® Video Laryngoscope**, with MILLER Laryngoscope-Blade, size 0, angle of view 60°, DCI technology
- 8401 E **BERCI-KAPLAN DCI® Video Laryngoscope**, with MILLER Laryngoscope-Blade, size 3, angle of view 60°, DCI technology
- 8401 G **BERCI-KAPLAN DCI® Video Laryngoscope**, with MILLER laryngoscope blade size 1, angle of view 60°, for DCI® technology
- 8401 K **BERCI-KAPLAN DCI® Video Laryngoscope**, for DCI® technology, with MACINTOSH laryngoscope blade, size 2, angle of view 60°



DCI® Intubation Fiberscope

- 11605 EV **Intubation Fiberscope**, with DCI® connection, Direction of View: 0°
 Angle of view 70°
 Working length 35 cm
 Total length 43 cm
 Distal tip 1.8 mm
- 11301 AAD **Intubation Fiberscope**, with DCI® connection
 Direction of view 0°
 Angle of view 88°
 Working length 65 cm
 Total length 98 cm
 Working channel diameter 1.2 mm
 Distal tip 2.8 mm
 Deflection 140°/140°
- 11301 ABD **Intubation Fiberscope 2.8 x 50**, with DCI® connection,
 Working Channel: 1.2 mm,
 Direction of View: 0°,
 Angle of View: 88°,
 Working Length: 50 cm,
 Dist. Outer Dia.: 2.8 mm,
 Deflection: 140°/140°

- 11302 BDD **Intubation Fiberscope 3.7 x 65**,
with DCI® connection,
Working Channel: 1.5 mm
Direction of View: 0°
Angle of View: 90°
Working Length: 65 cm
Dist. Outer Dia.: 3.7 mm
Deflection: 140°/140°
- 11303 BDD **Intubation Fiberscope 4.5 x 65**
Working channel: 1.2 mm
Direction of view: 0 °
Angle of view: 110 °
Working length: 65 cm
Dist. Outer Dia.: 4.5 mm
Deflection: 140°/140°
- 11301 BND **Intubation Fiberscope 5.0 x 65**,
with DCI® connection,
Working Channel: 2.3 mm
Direction of View: 0°
Angle of View: 110°
Working Length: 65 cm
Dist. Outer Dia.: 5.2 mm
Deflection: 140°/140°

BRAMBRINCK Intubation Endoscope

- 11605 CV **BRAMBRINCK Intubation Endoscope**,
with DCI® connection, 35,000 pixels,
outer diameter 2 mm, semiflexible,
for tube sizes 2.5-3.5 mm, magnification 40 x, sheath
working length 22 cm, distal angle 40°,
including adaptor 10332 BA, for tube placement and
O₂ application



11605 CV

BONFILS Intubation Endoscope

- 10332 BD **BONFILS Retromolar Intubation Endoscope**,
with DCI-connection, 35,000 pixels,
outer diameter. 3.5 mm, for ETT 4.0 - 5.5 mm,
sheath working length 35 cm, distal angle 40°,
including tube holder 10332 BA for tube place-
ment and O₂ application
- 10331 BD **BONFILS Retromolar Intubation Endoscope**,
with DCI® connection, 35,000 pixels,
outer diameter 5.0 mm, for ETT > 5.5 mm,
sheath working length 40 cm, distal angle 40°,
including tube holder 10331 BA for tube placement
and O₂ application



10332 BD

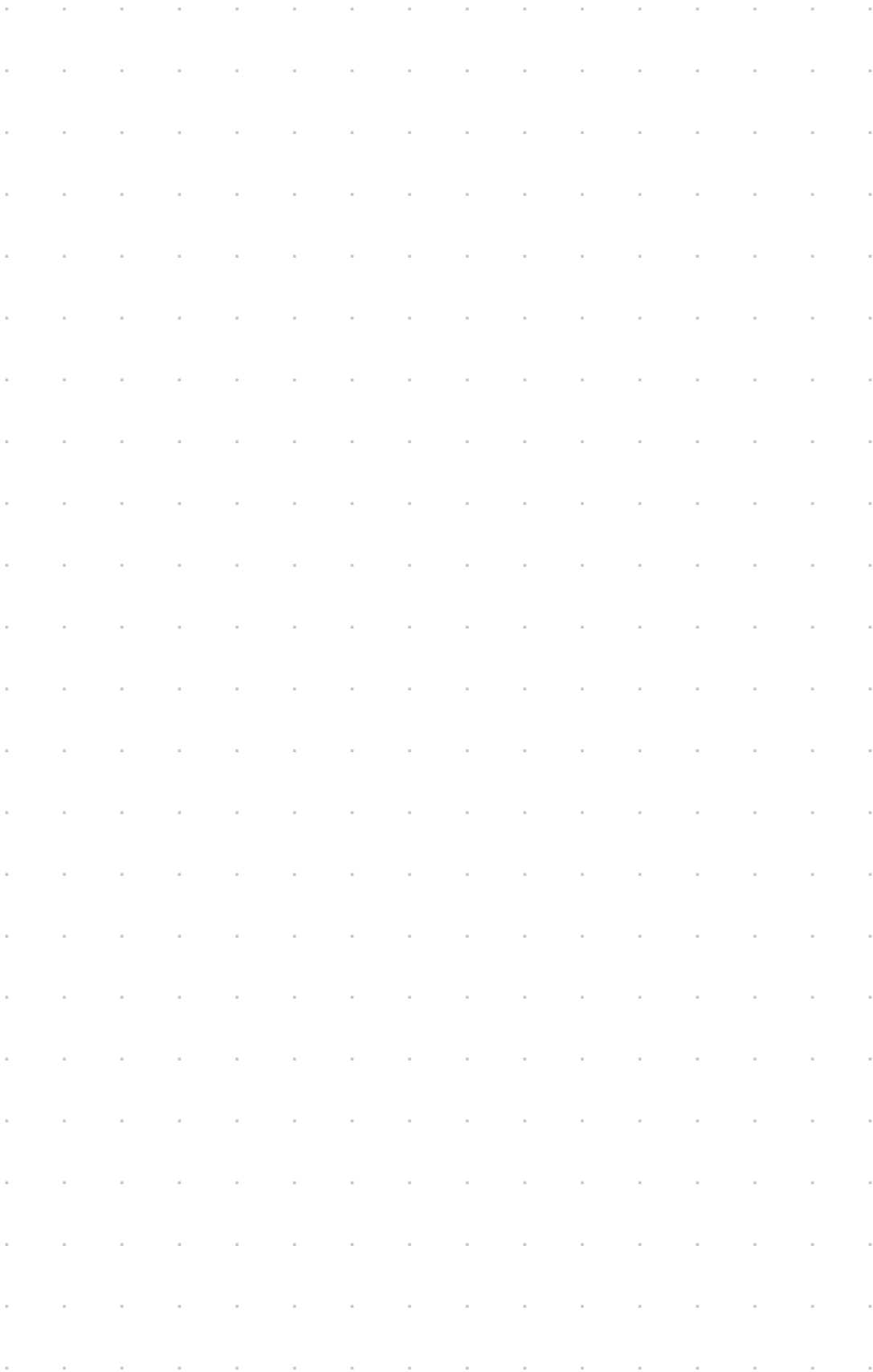
10331 BD

- 20260031 **Adaptor**, for use with DCI® telescopes as eyepiece
version



20260031

Notes





ENDOWORLD



ENDOWORLD®

WWW.KARLSTORZ.COM

KARL STORZ GmbH & Co. KG
Mittelstraße 8, 78532 Tuttlingen, Germany
Postfach 230, 78503 Tuttlingen, Germany
Phone: +49 7461 708-0
Fax: +49 7461 708-105
E-Mail: info@karlstorz.de
www.karlstorz.com

KARL STORZ Endoscopy-America, Inc.
2151 East Grand Avenue
El Segundo, CA 90245-5017, USA
Phone: +1 424 218-8100, +1 800 421-0837
Fax: +1 424 218-8526
E-Mail: info@ksea.com

STORZ
KARL STORZ — ENDOSKOPE
THE DIAMOND STANDARD

AN 5-6-E/04-2010